

## Unpacking guide of Tina2

3D Printers are precision equipment, and we have debugged and reinforced various parameters and component packages. Uncertainty in logistics and transportation may cause machine parameter misalignment or hardware damage. Please test the printer after opening box. If you have any problem, please contact us! Our email address is: [saleservice@wiibootech.com](mailto:saleservice@wiibootech.com), we will give you the most professional guidance. You can go to our wiki website for more information. <http://weedo.ltd/weedoltd/wiki/doku.php>

### Step 1: Open the package of Tina2



Open your Accessory box list:



Two piece of sticker /1.5mm hex wrench /2.0mm hex wrench / /2.5mm hex wrench/ Wrench / M6 Nozzle /TF Card/TF Card Reader/USB Cable/ Power adaptor/Power cable/Glue/ Filament/

### Step2: Prepare for printing

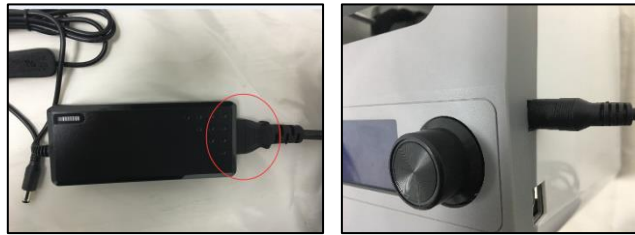


Take out the printer, then take off the fixed block in front of the platform, after you complete this step, turn to the back of the printer, take off the fixed block in the behind, **Rotate the coupling in clockwise way make it move up**, take out the foam between nozzle and platform. Put the feed cube into connector.



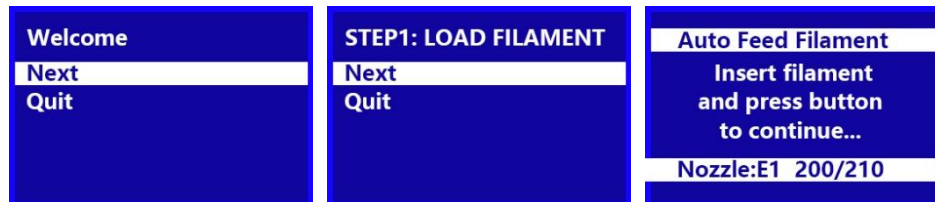
### Step3: Start Printing

Connect the power cable and power adaptor together and then prepare for power-on.

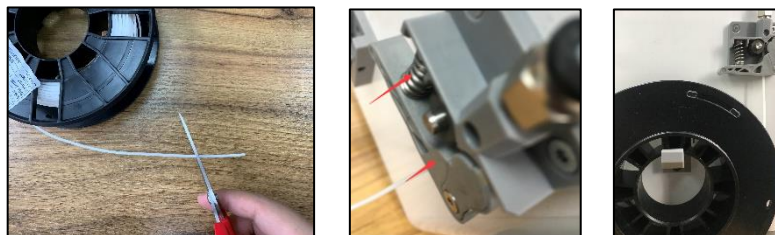


When you boot the machine, there is a wizard interface, just do with these steps

Step1: Load Filament



Make the filament get into feed tube. The beginning part of filament should cut, and make the filament straightly get into feed tube.



Step2: Insert SD Card, In this step you do not need to shut down the machine, you need pay attention to the Insert direction of the card, text surface in the left



Step3: Print from SD, choose the Gcode file in the SD Card.



After all this you have printed your first works, to know more about the machine function and usage, please read the Instruction manual in the SD card.